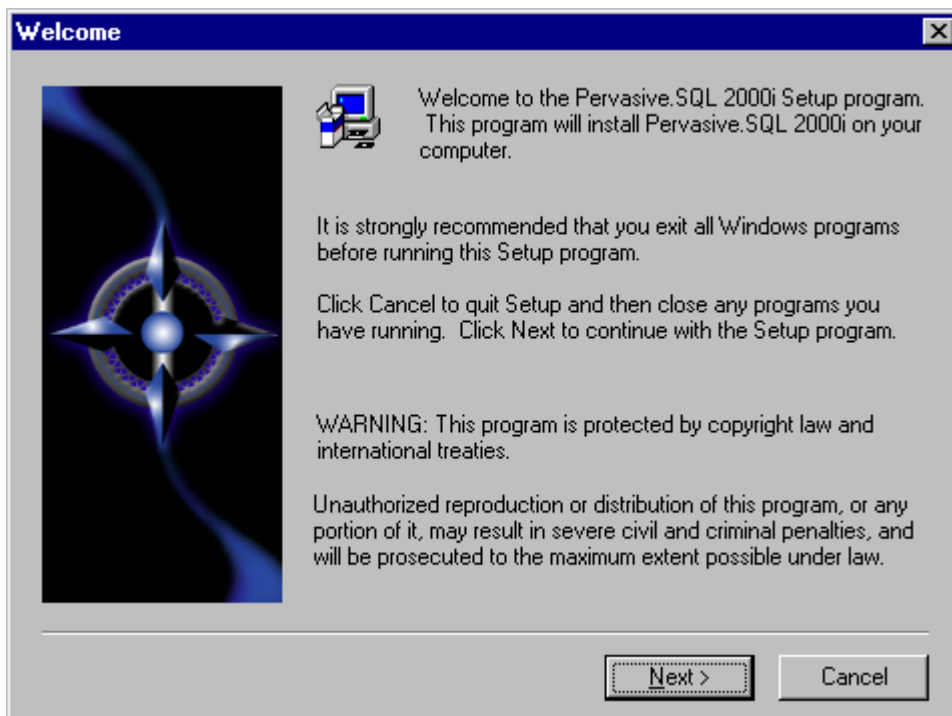


# Pervasive 2000 – Service Pack 3 Workstation Edition Installation Instructions

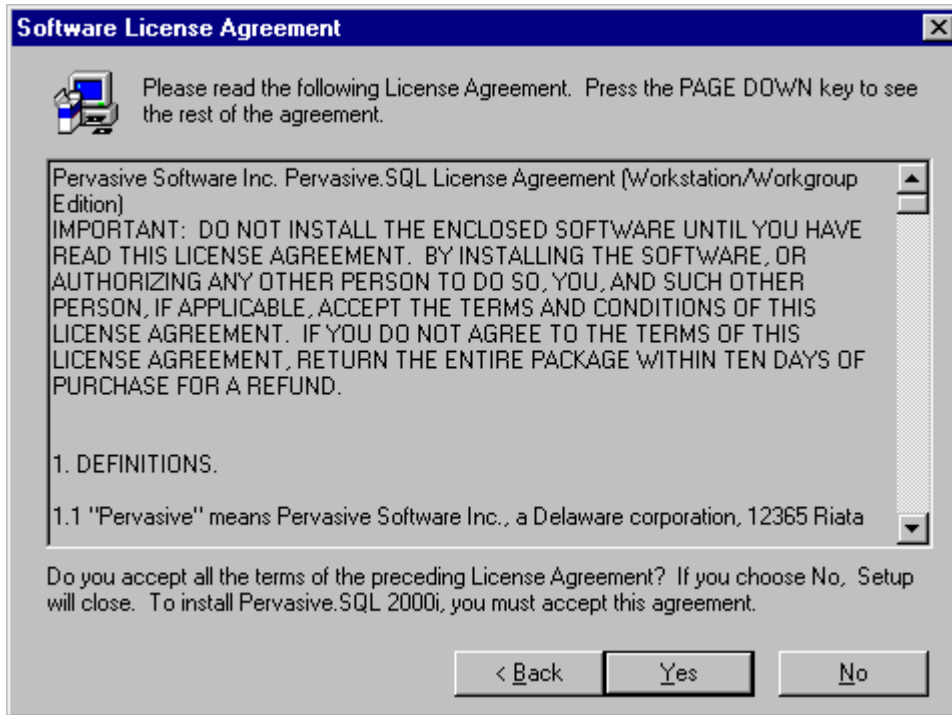
## Installing from the Pay-Ware CD:

1. Insert Pay-Ware CD into your CD Rom Drive
2. Go to Start – Run – Browse and Browse to your CD drive
3. Go to the folder “WSE”
4. Choose “Setup” and Double click OK

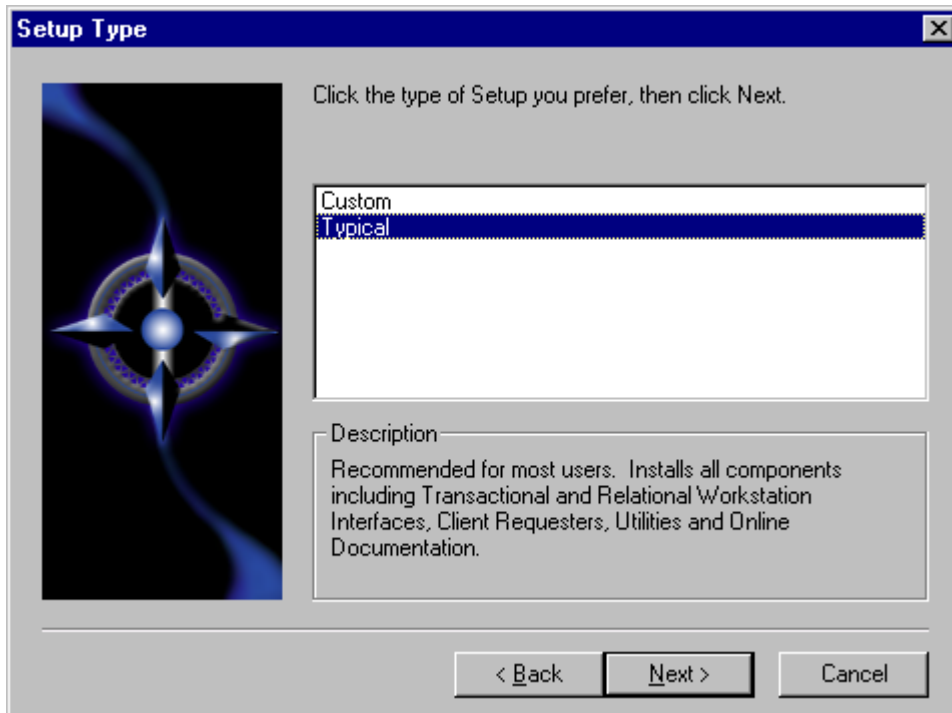
The Pervasive 2000 SP 3 Workstation install will begin



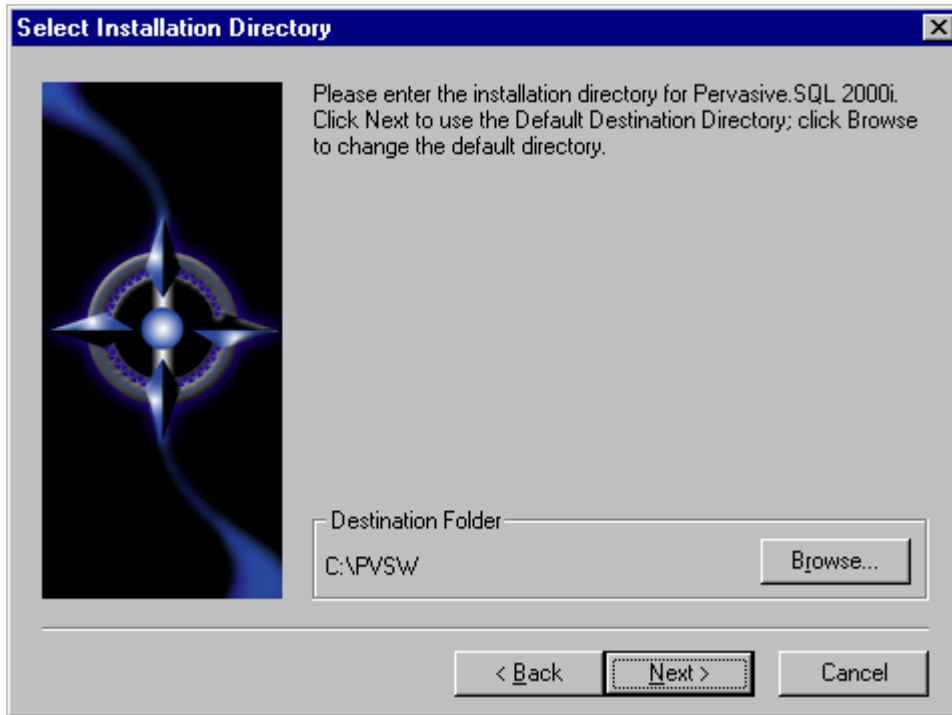
Click Next to continue



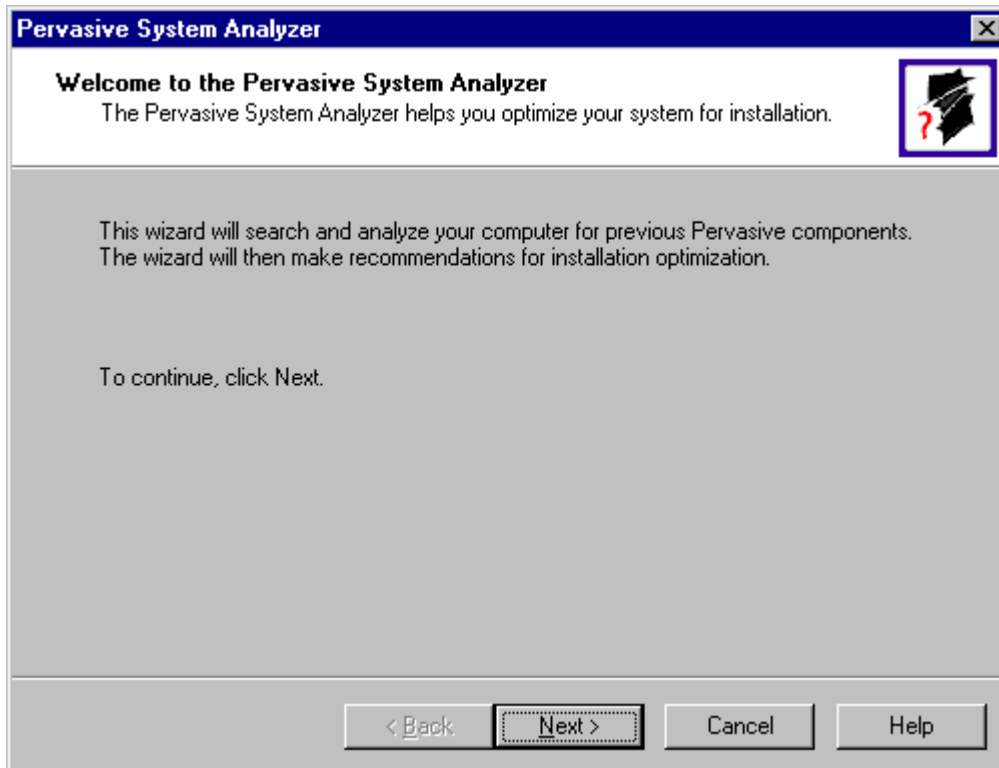
**Click Yes to Accept the License Agreement**



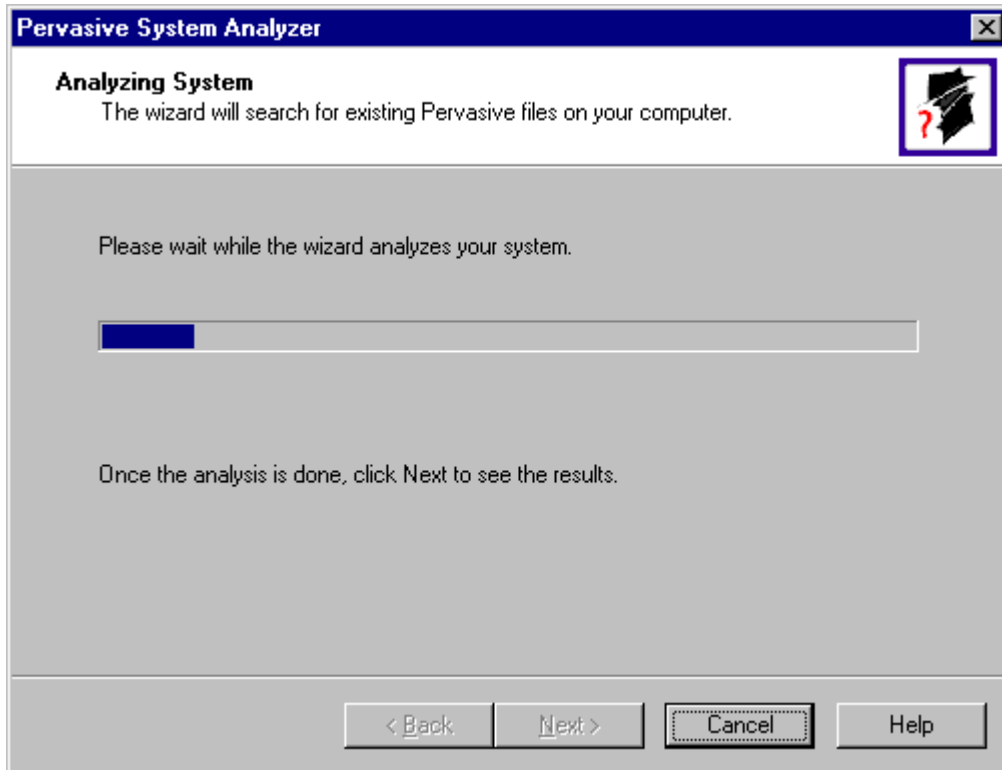
**Choose Typical and then Click Next to continue**



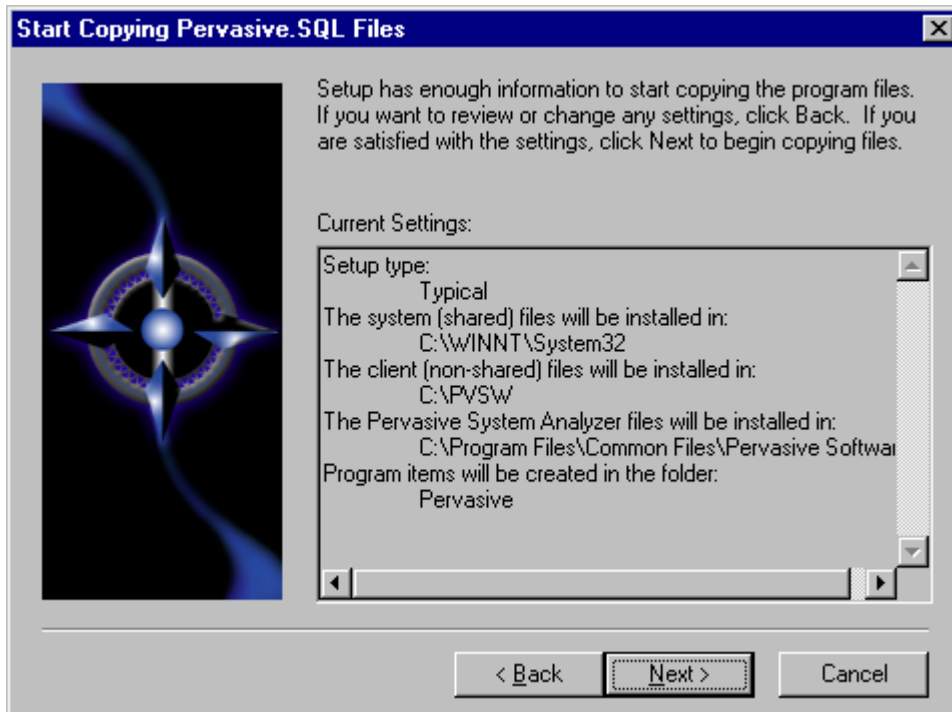
**Choose drive and location for installation. You should accept the default of C:\PVSW**



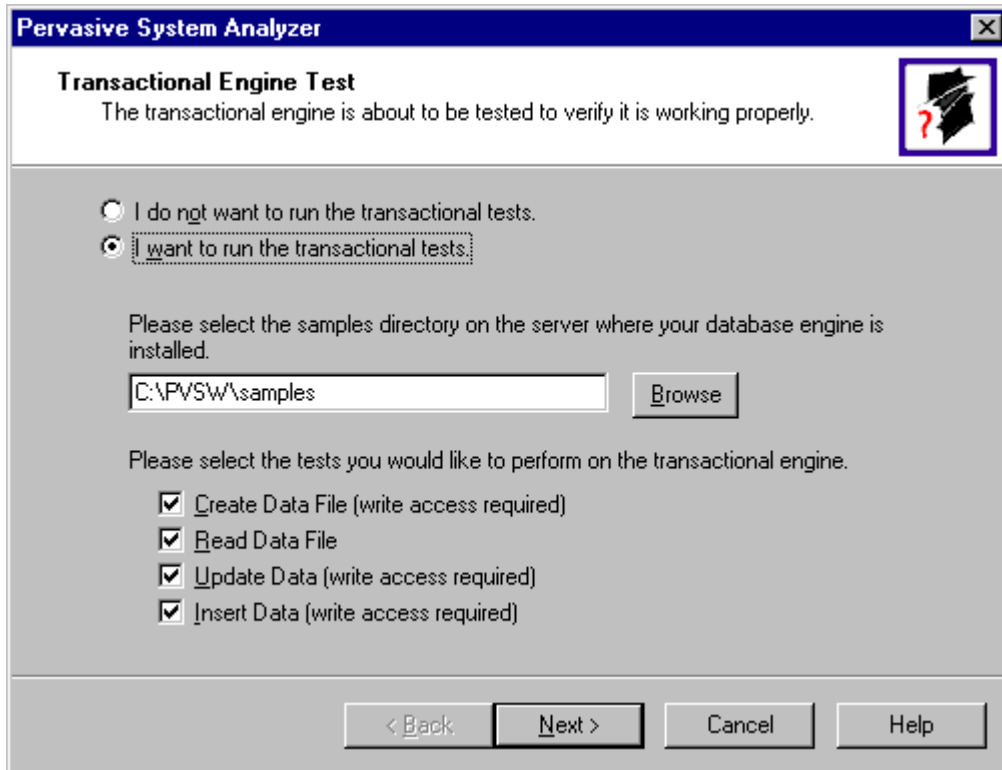
**Click next to continue**



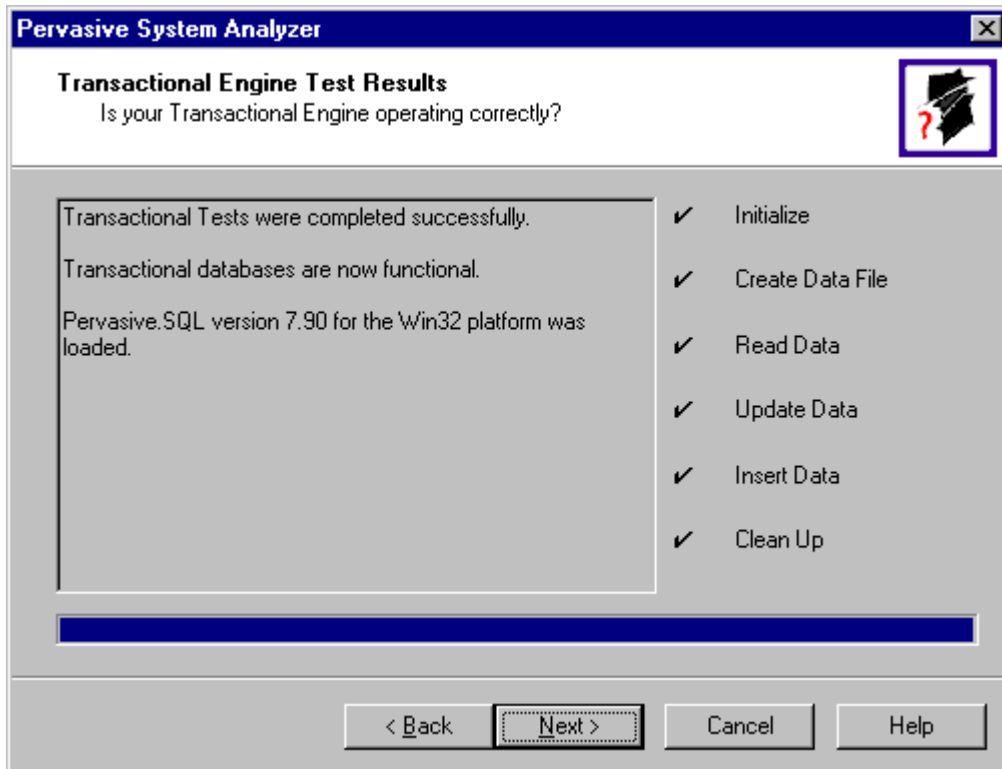
**Wait for the system to complete the analysis – Then click next to see the results**



**Click Next to continue**



**Choose I want to run the transactional tests and click next to continue**



**You should receive all check marks then Choose Next to continue**

**Pervasive System Analyzer**

### Relational Engine Test

The relational engine is about to be tested to verify that SQL Connection Manager on the engine is communicating as expected.

I do not want to run the relational tests.  
 I want to run the relational tests.

Please enter the name of the engine data source you would like to test.

Machine Name:   
Engine DSN:

Please select the tests you would like to perform on the relational engine.

- Create Table (write access required)
- Read Data
- Update Data (write access required)
- Insert Data (write access required)

< Back   Next >   Cancel   Help

Choose I want to run the relational tests then click Next to continue

**Pervasive System Analyzer**

### Relational Engine Test Results

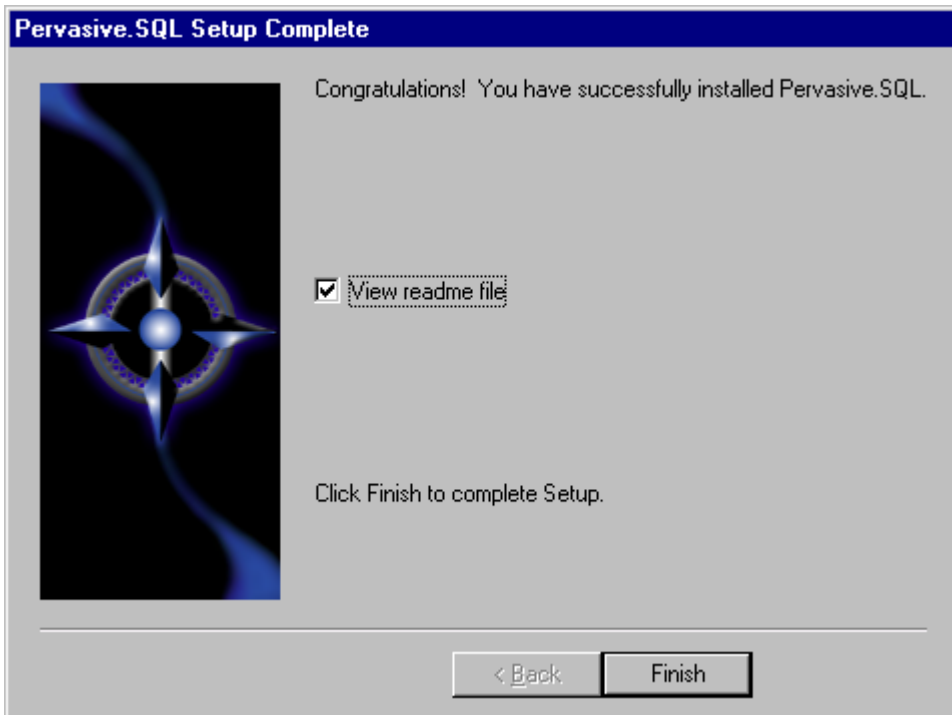
Is your Relational Engine operating correctly?

Relational access test completed.  
Relational access to Pervasive.SQL 2000i is functional

- ✓ Initialize
- ✓ Create Table
- ✓ Read Data
- ✓ Update Data
- ✓ Insert Data
- ✓ Clean Up

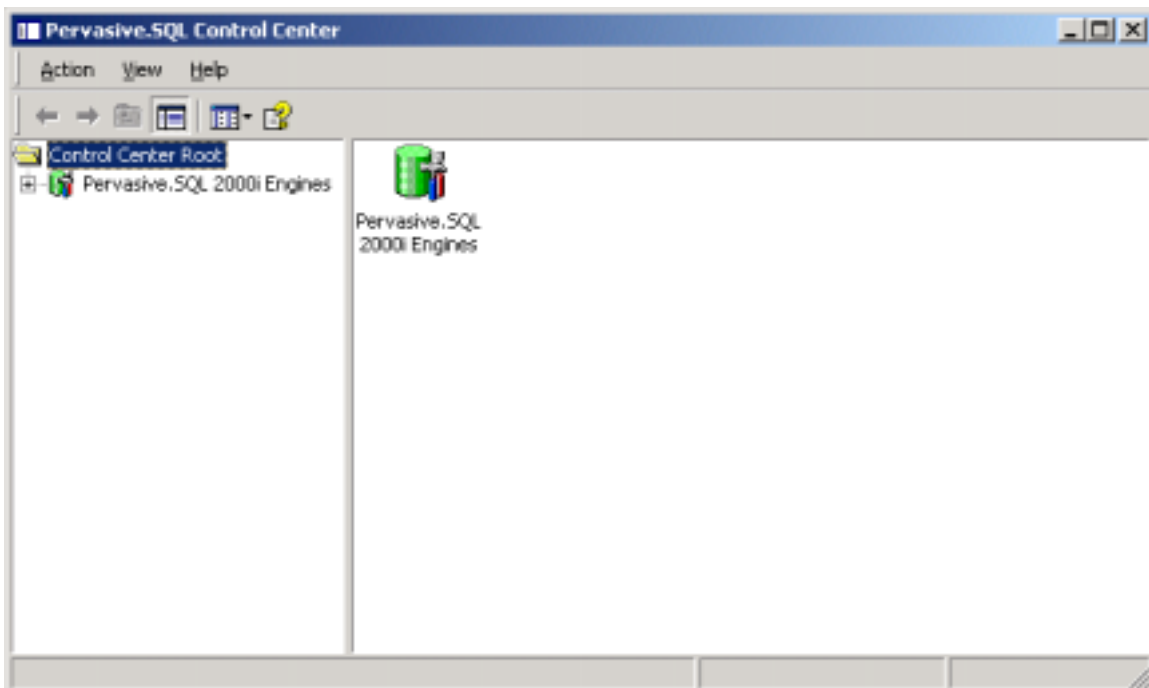
< Back   Next >   Cancel   Help

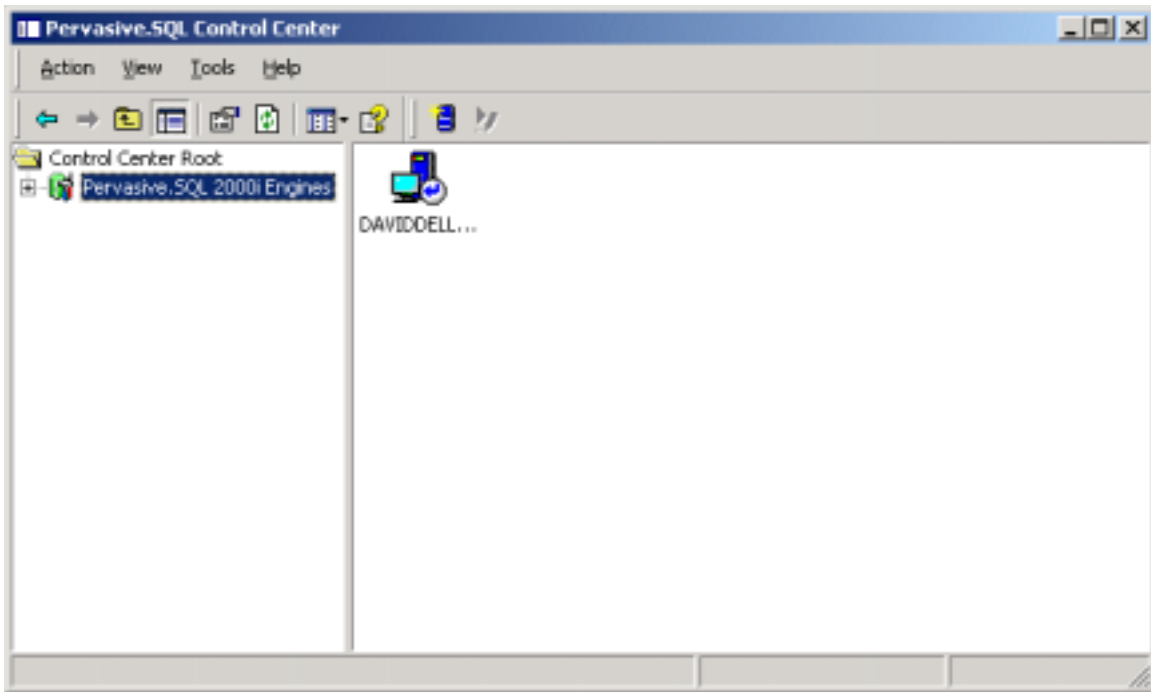
You should receive all check marks then click Next to continue



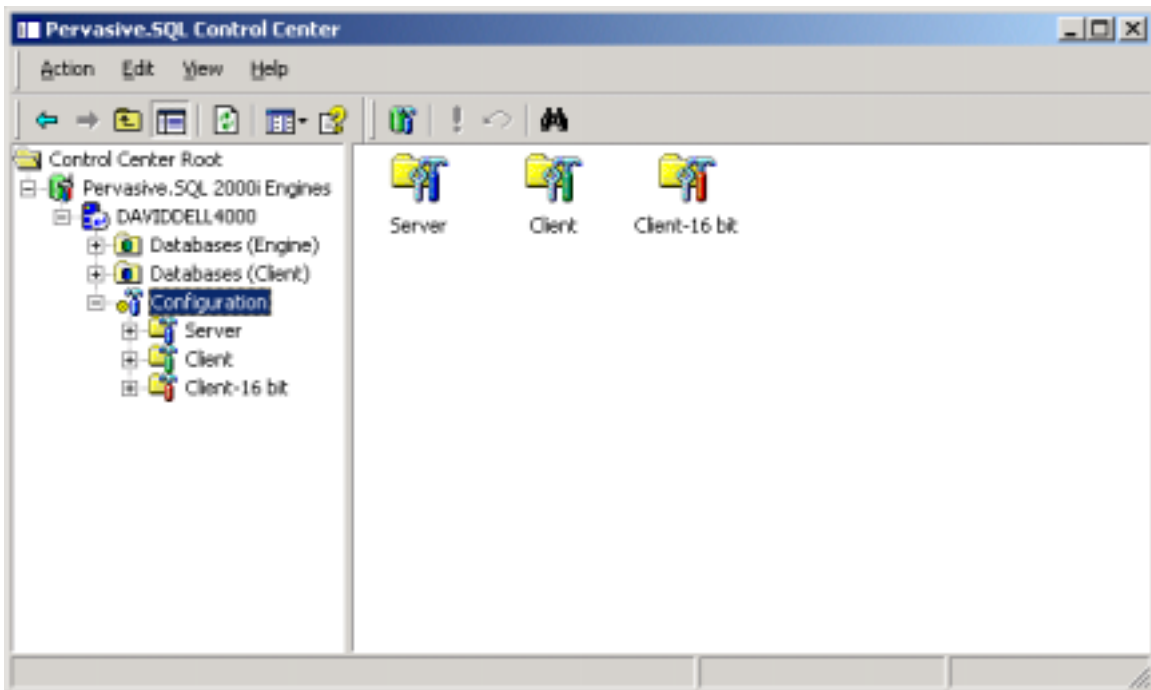
**Click Finish to complete the setup then restart your computer**

Once your computer has rebooted go to Start – Programs – Pervasive – Pervasive Control Center.

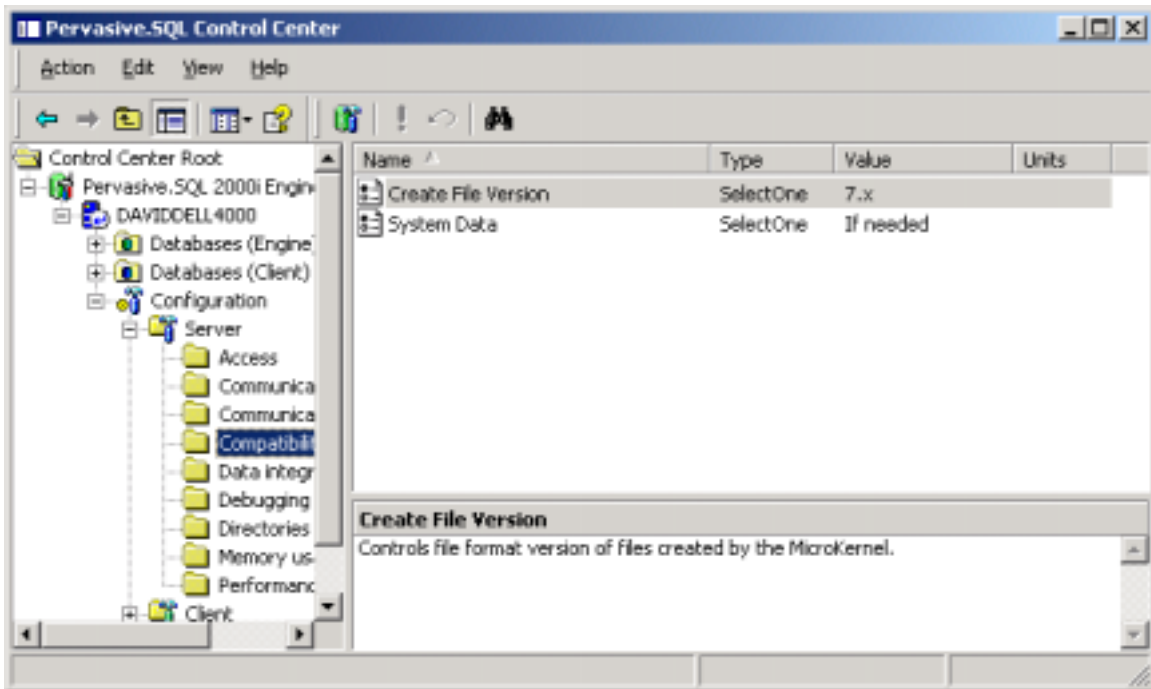




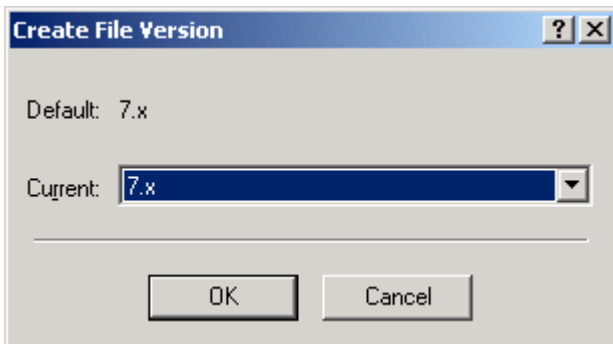
Click on the + sign next to Pervasive SQL 2000i Engines



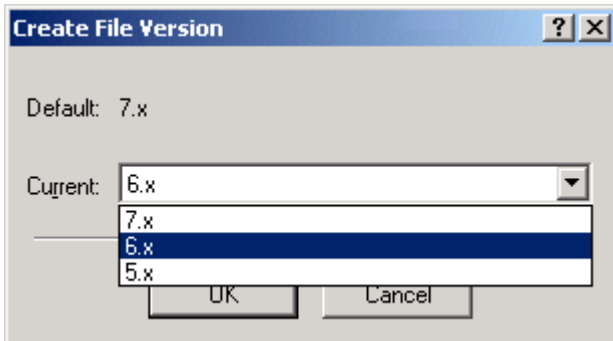
Click on the + sign next to Configuration

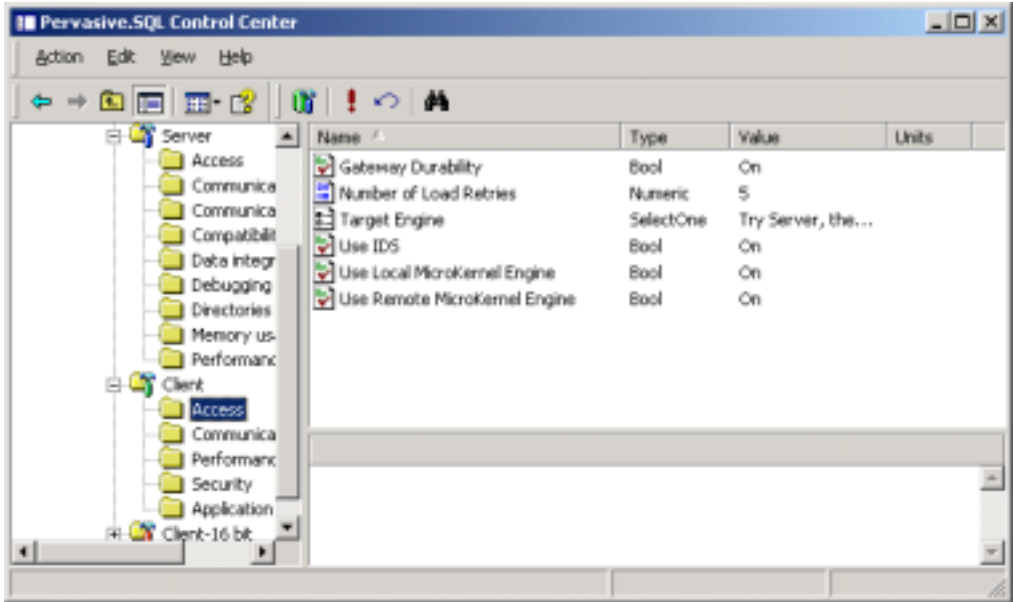


Click on Server to see the available folders – go to Compatibility – double click on Create File Version. Default value is 7.x

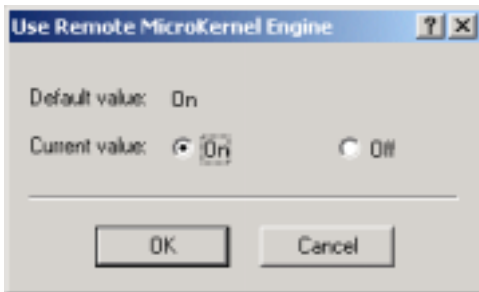
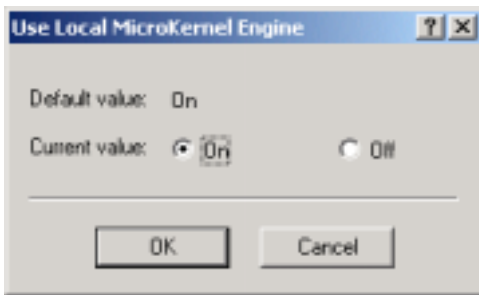
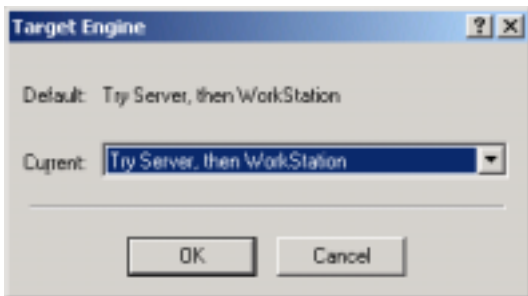


Click on the drop down arrow to see choices and choose 6.x. Click on OK to exit Create File Version.



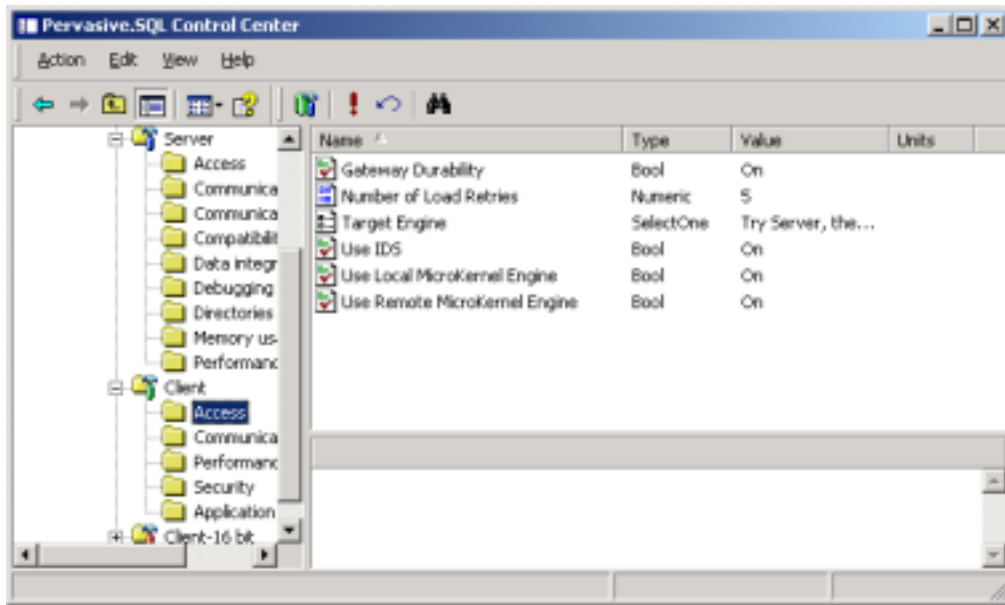


Click on + sign beside Client Folder – double click on Access

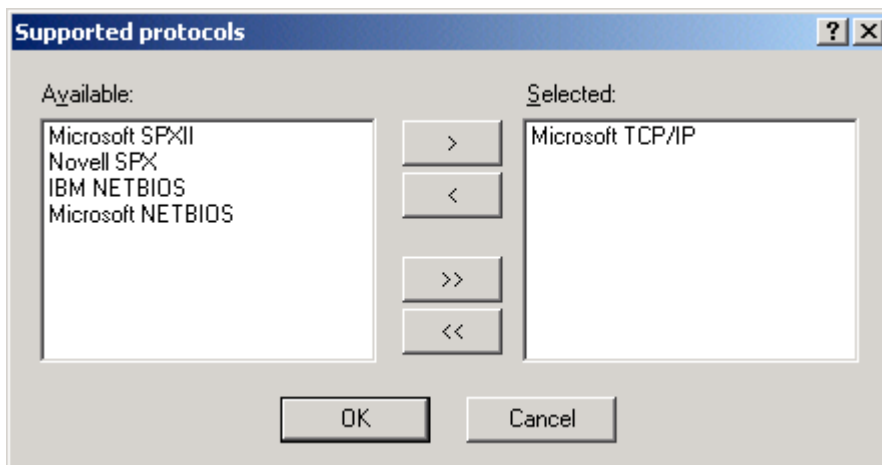


Verify the following settings:

Target Engine = Try Server, then Work Station.  
 Use Local MicroKernel Engine = On  
 Use Remote MicroKernel Engine = On



**Click on Communication Protocols Folder**

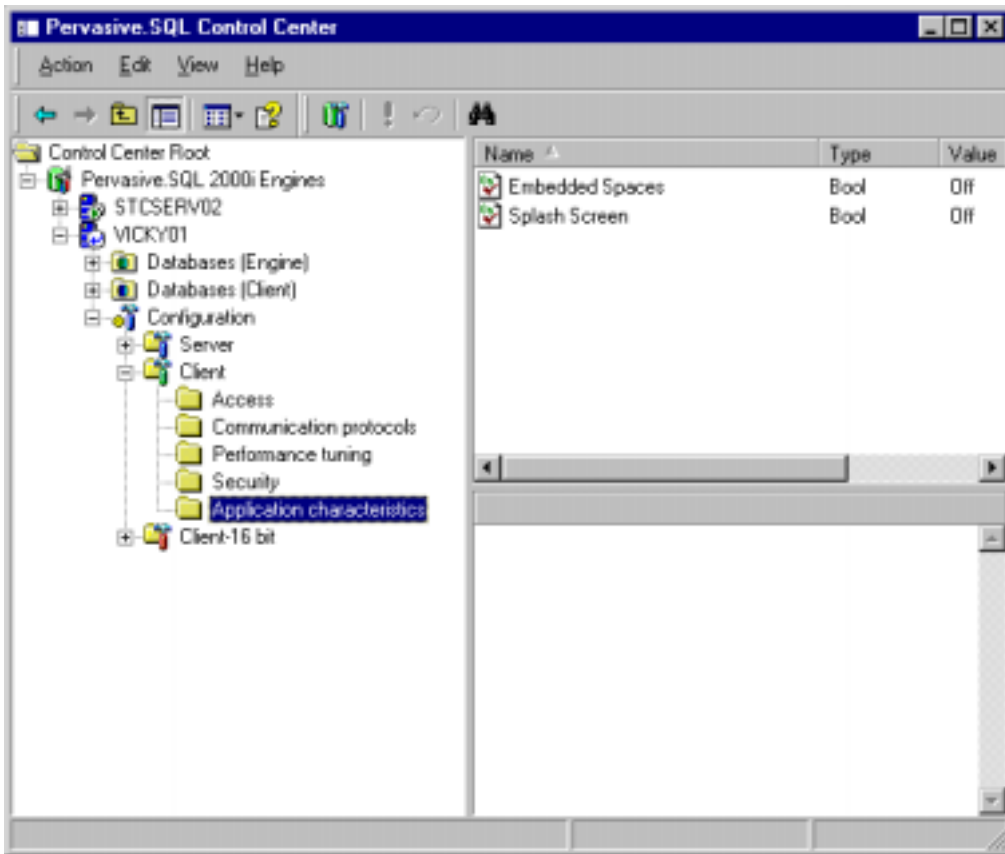


**Choose Protocol based on your network configuration**

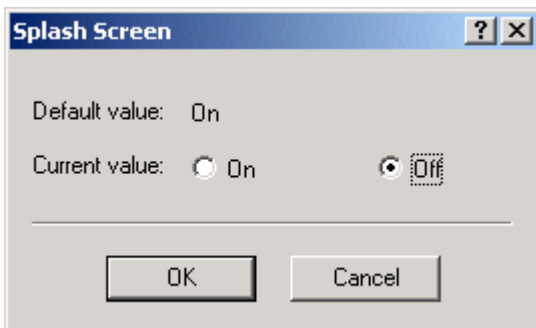
General Protocol Rules:

- a. Windows NT or Windows 2000 Server – Choose Microsoft TCP/IP
- b. Novell Server – Choose Novell SPX or Microsoft SPXII

Note: choosing the wrong protocol will cause your Pervasive application not to function correctly – if your application does not appear to work correctly you can go back into the Pervasive Control Center and change the setting.



Click on Application characteristics folder



Change value of Splash Screen to Off

Once you have completed these changes Click on Edit and Apply. You will have to stop and start the Pervasive Engine for these changes to take affect.

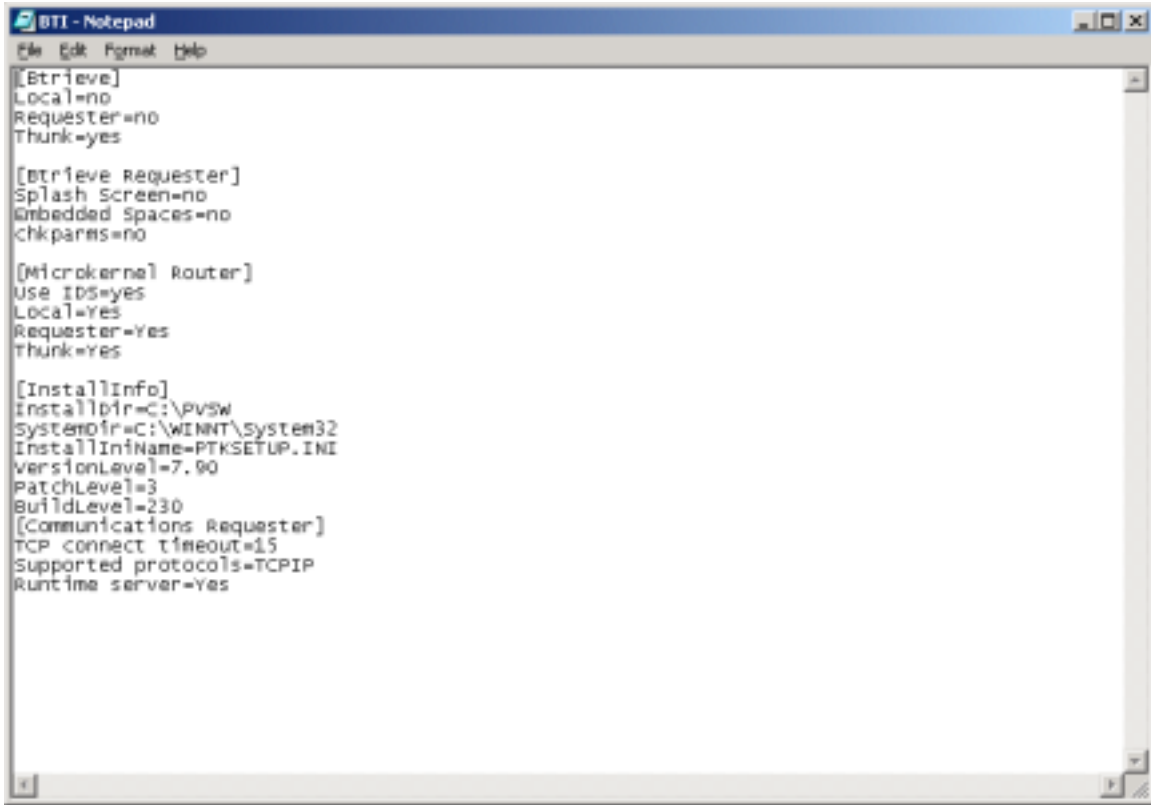
To Stop the Pervasive Engine:

Right Click on the Pervasive Database – Pre-load icon in your System Tray then click on Stop Engines and Exit.

To Start the Pervasive Engine:

Go to Start – Programs – Pervasive – Pervasive SQL 2000i – Engines – Click on the Pervasive SQL Workstation Engine.

Next you will need to Edit the BTI.ini file. This file is located in the C:\Windows directory for Windows 95, 98 or ME and in the C:\Winnt directory for Windows NT and Windows 2000 Professional and can be opened with notepad.



Settings should be as follows:

Section	Item	Value to be set
Btrieve	local	no
Btrieve	requester	no
Btrieve	think	yes
Btrieve Requester	Splash Screen	no
Microkernel Router	local	yes
Microkernel Router	requester	yes
Microkernel Router	think	yes

If the above section is not in the file – you may add it by using [ ] around the section heading and then listing the item below.